

T-SUNLUX REFLECTIVE GLASS

HIGH PERFORMANCE SOLAR CONTROL



T-Sunlux is a coated glass that provides a combination of reflective aesthetics with high solar control. Two options are available, CS130 with moderate reflectiveness and CS108 with very high, almost mirror like reflectivity. Available in 4mm and 6mm base thicknesses, heat strengthened, toughened and laminated option with coating against the PVB interlayer.

FEATURES AND APPLICATIONS:

- > Reflective glass appearance;
- > Residential and commercial windows, doors and skylights;
- > Lower SHGC values for improved solar control;
- > Lower U-value for thermal control when laminated with SOL-R™ Low-E coated glass and/or in IGU's.

RANGE:

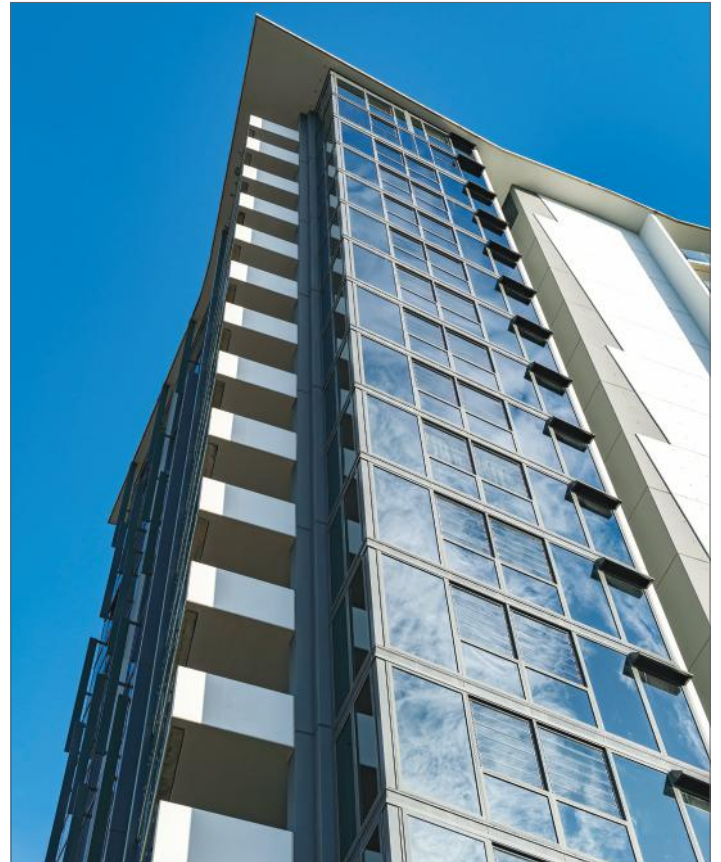
- > **Thickness** - 4mm & 6mm both CS108 & CS130
- > **Sheet Sizes** - 5100mm x 3210mm, 3660mm x 2440mm
- > **Process** - Annealed, heat strengthened, toughened, laminated and IGU.

DESIGN AND GLAZING NOTES:

National Glass stock two types of T-Sunlux coated glass, CS130 and CS108. CS130 provides external reflectivity closer to 20%. CS108 provides very high reflectivity, almost mirror like and is mainly used as the base product for One Way laminated mirror. Because CS108 is highly reflective it may not pass local council by laws in relation to maximum reflectivity.

Toughening and heat strengthening – because this glass is more reflective than standard non coated glass, the process of tempering will create visual distortions in the surface when viewed.

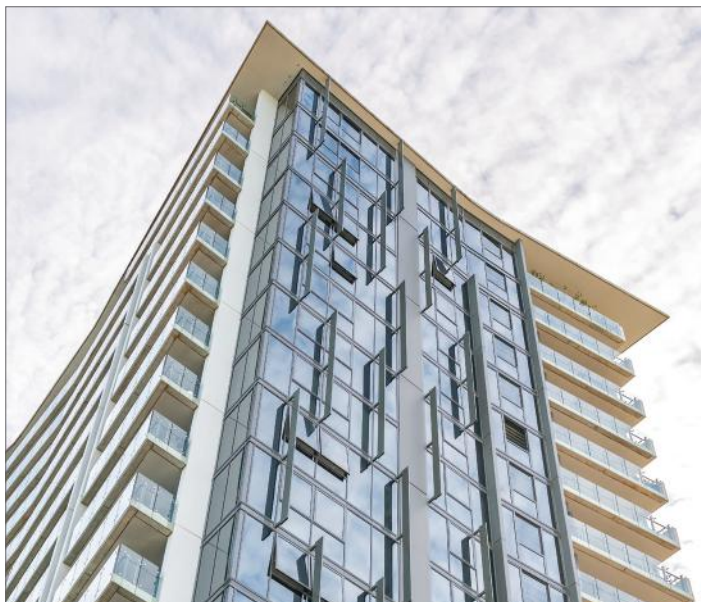
Thermal Breakage – in annealed or float form T-Sunlux glass is subject to risk of thermal breakage and may require a thermal assessment. To avoid thermal breakage toughening or heat strengthening is recommended.



11.52mm CS130 Ocean Grey laminated.



10.38mm CS130 Grey laminated - Exterior.



11.52mm CS130 Ocean Grey laminated.



10.38mm CS130 Grey laminated - Interior.

T-SUNLUX REFLECTIVE GLASS

HIGH PERFORMANCE SOLAR CONTROL



ENERGY PERFORMANCE DATA					
	VLT%	VLR%	VLRi%	SHGC	U-Value
SINGLE GLASS					
4mm CS130 float (2)	33	19	26	0.46	5.2
6mm CS130 float (2)	33	19	26	0.45	5.2
9.52mm CS130 Clear PVB laminated (2)	33	20	16	0.44	5.7
9.52mm CS130 Grey PVB laminated (2)	16	19	7	0.39	5.7
9.52mm CS130 + SOL-R™ Clear (4) laminated	30	20	17	0.34	3.6
9.52mm CS130 Grey PVB + SOL-R™ Clear (4) laminated	14	19	10	0.29	3.6
4mm CS108 float (2)	9	41	42	0.21	4.4
6mm CS108 float (2)	9	40	42	0.21	4.4
9.52mm CS108 Grey PVB laminated (2)	8	34	9	0.29	5.7
11.52mm CS108 Grey PVB laminated (2)	8	34	9	0.29	5.6
13.52mm CS108 Grey PVB laminated (2)	8	33	9	0.29	5.6
DUO PLUS™ IGU*					
4mm CS130 float (2)/12mm Argon/4mm Clear float	30	20	29	0.37	2.4
6mm CS130 float (2)/12mm Argon/6mm Clear float	30	19	29	0.35	2.3
9.52mm CS130 Clear PVB laminated (2)/12mm Argon/6mm Clear float	30	21	20	0.33	2.5
9.52mm CS130 Grey PVB laminated (2)/12mm Argon/6mm Clear float	14	20	13	0.27	2.5

ENERGY DATA BASED ON NFRC 100-2010 AND SHOWN AS GLASS ONLY VALUES.

VLT% - % of visible light transmittance or a measure of the amount of natural daylight the glass allows through.

VLR% - % of visible light reflectance externally.

VLRi% - % of visible light reflectance internally.

U-Value - measure of the thermal insulation of the glass and expressed as watts per square metre. The lower the number the better the performance of the glazing.

SHGC - Solar Heat Gain Co-efficient and is a common measure used in relation to the cooling of the building. The lower the number, the more efficient the glass in reducing the sun's direct energy impact through the glass.

*Laminated product has been made up as 9.52mm heat strengthened or toughened laminated. Whilst thinner laminated glass is possible (eg 7.38mm/8.38mm), we recommend a thermal assessment of any annealed glass.